

> ID710

ViewBoard Pen Display User Guide



IMPORTANT: Please read this User Guide to obtain important information on installing and using your product in a safe manner, as well as registering your product for future service. Warranty information contained in this User Guide will describe your limited coverage from ViewSonic® Corporation, which is also found on our web site at <http://www.viewsonic.com> in English, or in specific languages using the Regional selection box in the upper right corner of our website. "Antes de operar su equipo lea cuidadosamente las instrucciones en este manual"

Model No. VS18678
P/N: ID710

Thank you for choosing ViewSonic®

As a world-leading provider of visual solutions, ViewSonic® is dedicated to exceeding the world's expectations for technological evolution, innovation, and simplicity. At ViewSonic®, we believe that our products have the potential to make a positive impact in the world, and we are confident that the ViewSonic® product you have chosen will serve you well.

Once again, thank you for choosing ViewSonic®!

> Safety Precautions

Please read the following **Safety Precautions** before you start using the device.

- Keep this user guide in a safe place for later reference.
- Read all warnings and follow all instructions.
- Allow at least 4" (10 cm) clearance around the device to ensure proper ventilation.
- Place the device in a well-ventilated area. Do not place anything on the device that prevents heat dissipation.
- Do not use the device near water. To reduce the risk of fire or electric shock, do not expose the device to moisture.
- Avoid exposing the device to direct sunlight or other sources of sustained heat.
- Do not install near any heat sources such as radiators, heat registers, stoves, or other devices (including amplifiers) that may increase the temperature of the device to dangerous levels.
- Use a soft, dry cloth to clean the external housing.
- Oil may collect on the screen if you touch it.
- Do not touch the screen surface with sharp or hard objects, as it may cause damage to the screen.
- When moving the device, be careful not to drop or bump the device on anything.
- Do not place the device on an uneven or unstable surface. The device may fall over resulting in an injury or a malfunction.
- Do not place any heavy objects on the device or connection cables.
- If smoke, an abnormal noise, or a strange odor is present, immediately turn the device off and call your dealer or ViewSonic®. It is dangerous to continue using the device.
- When connecting to a power outlet, DO NOT remove the grounding prong. Please ensure grounding prongs are NEVER REMOVED.
- Protect the power cord from being treaded upon or pinched, particularly at the plug, and at the point where it emerges from the equipment. Ensure that the power outlet is located near the equipment so that it is easily accessible.
- Only use attachments/accessories specified by the manufacturer.
- Disconnect the device if it is not going to be used for a long period of time.

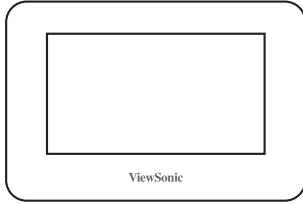
> Contents

Safety Precautions	3
Introduction	6
Package Contents	6
Product Overview	7
Making Connections	8
Connecting the Pen Display	8
Driver Installation, Use, and Removal	9
Installing Drivers and Software (Windows)	9
DisplayLink Driver	9
Pen Display Driver	10
Setting the Display Area	11
Pen Input Area Mapping.....	12
Uninstalling the Driver	14
Installing Drivers and Software (MAC OSX)	15
DisplayLink Driver.....	15
Pen Display Driver	17
Pen Input Area Mapping.....	20
Uninstalling the Driver	22

Appendix.....	23
Specifications.....	23
Product Dimensions	24
Troubleshooting	25
FAQ.....	26
Maintenance.....	27
General Precautions	27
Cleaning the Device.....	27
Replacing the Pen Nib.....	28
Regulatory and Service Information	29
Compliance Information.....	29
FCC Compliance Statement.....	29
Industry Canada Statement.....	29
CE Conformity for European Countries	29
Declaration of RoHS2 Compliance.....	30
Indian Restriction of Hazardous Substances	31
Product Disposal at End of Product Life	31
Copyright Information	32
Customer Service	33
Limited Warranty	34
Mexico Limited Warranty.....	37

> Introduction

Package Contents



ID710 ViewBoard
Pen Display



USB Cable
(Type C to Type A)



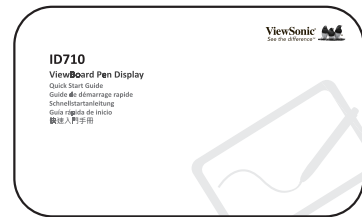
ViewSonic Stylus



Pen nib x 3



Nib removal tool

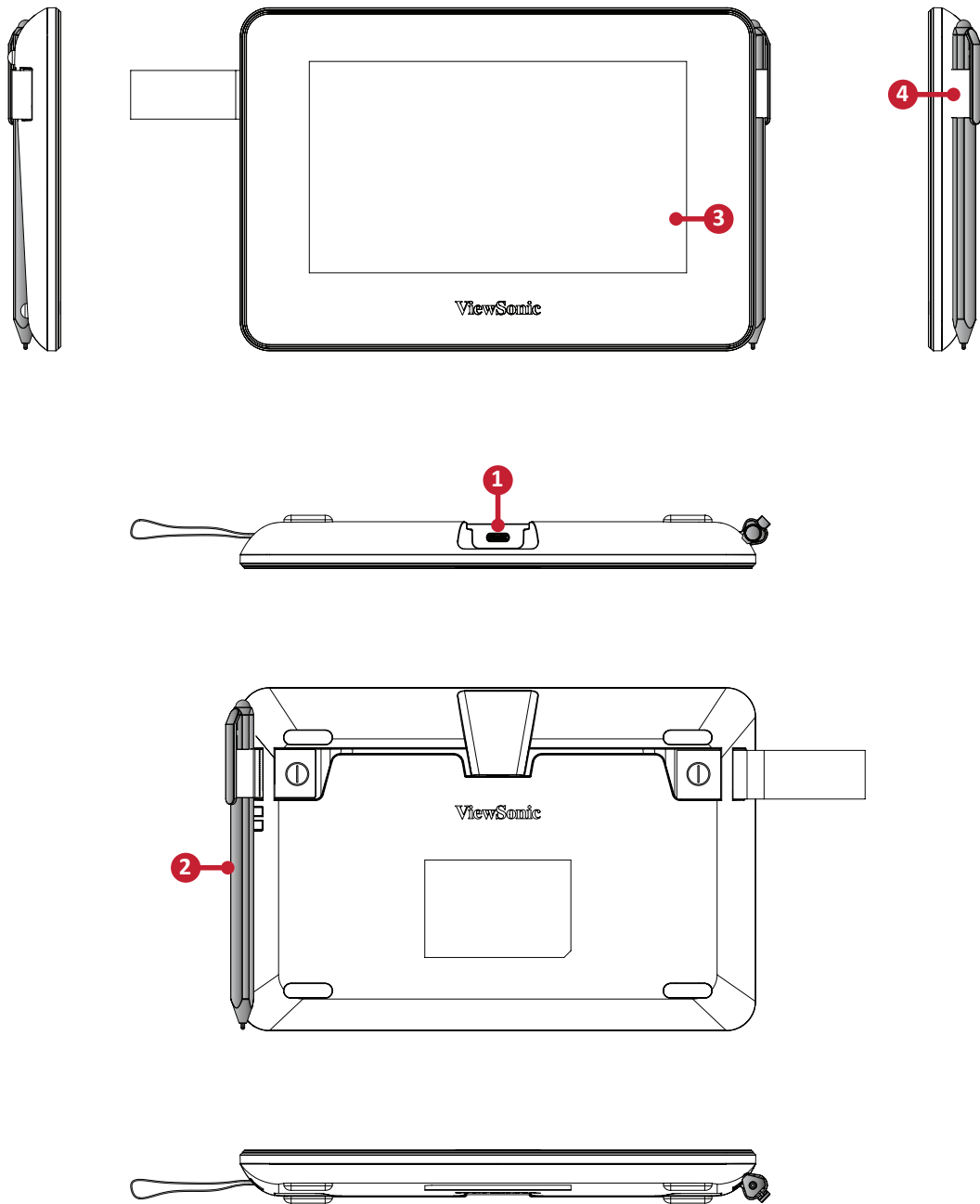


Quick start guide

NOTE: The contents included in your package may vary depending on your country. Please contact your local reseller for more information.

Product Overview

Pen Display



1. USB Type C Port

2. Pen

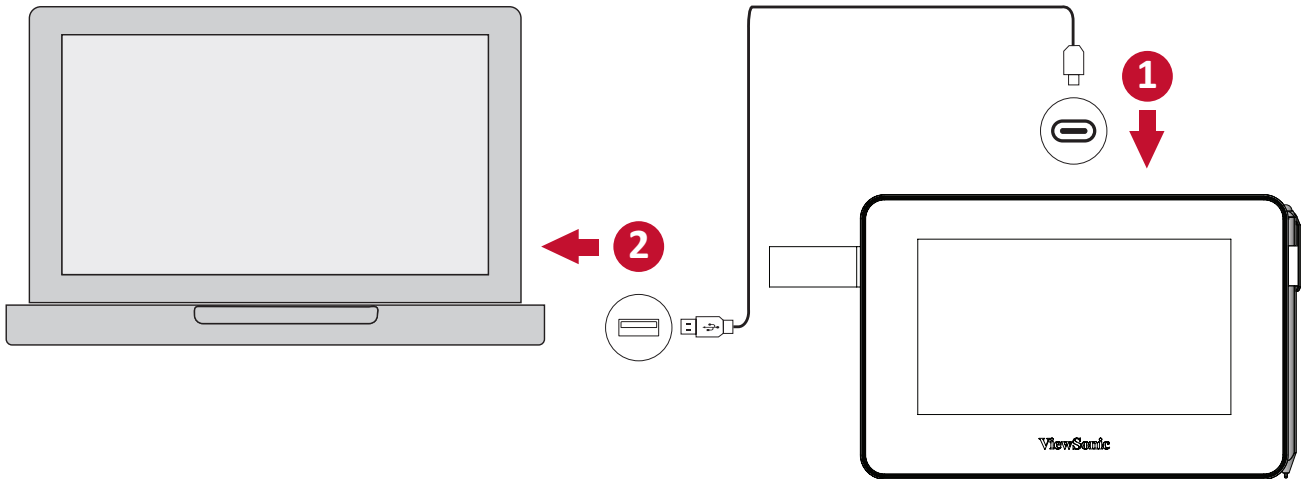
3. Display Screen

4. Pen Holder

> Making Connections

Connecting the Pen Display

1. With the USB Cable, connect the USB Type C end to the Pen Display.
2. Connect the USB Type A end to the computer.



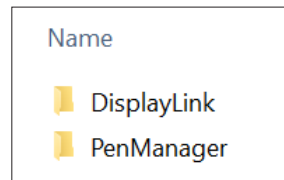
> Driver Installation, Use, and Removal

Installing Drivers and Software (Windows)

System Requirements: Windows 7/8/10 or above.

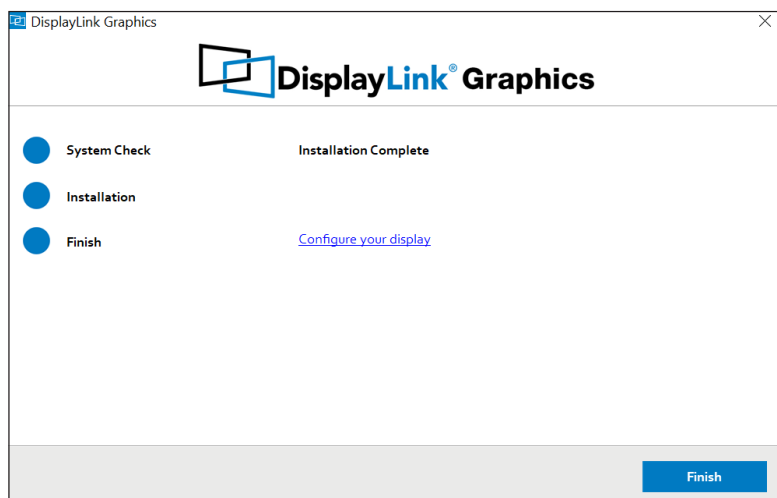
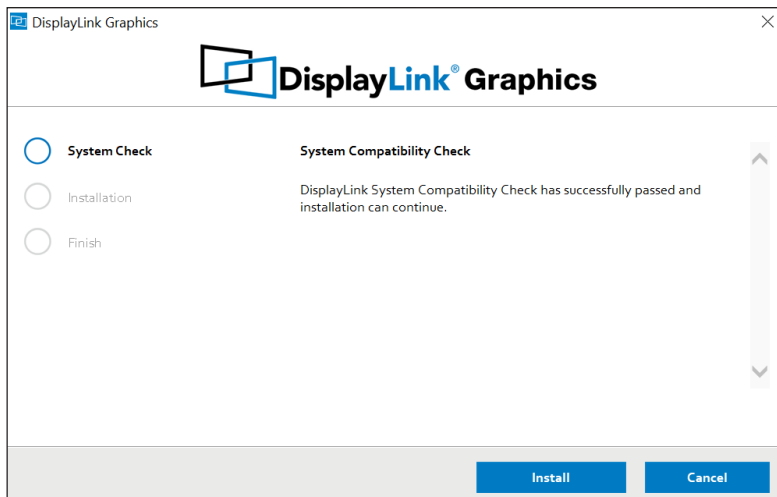
Before connecting and using the pen display, it is necessary to install the below drivers and software. The drivers and software can be downloaded at:

<https://www.viewsonic.com/global/products/pendisplay/ID710-BWW>



DisplayLink Driver

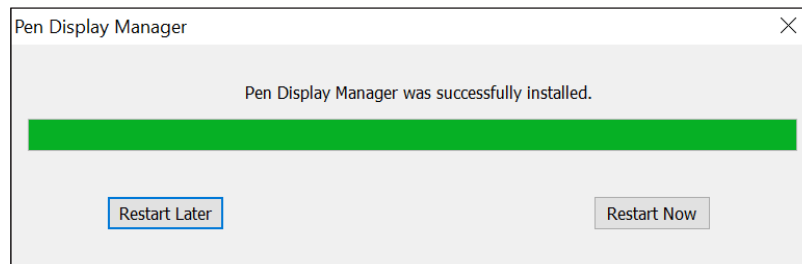
Open the DisplayLink installation file and install the driver.



NOTE: DisplayLink Driver can be installed through Windows Update.

Pen Display Driver

1. Open the PenDisplayDriver installation file and install the driver.
2. After the installation completes, you will need to restart the computer.

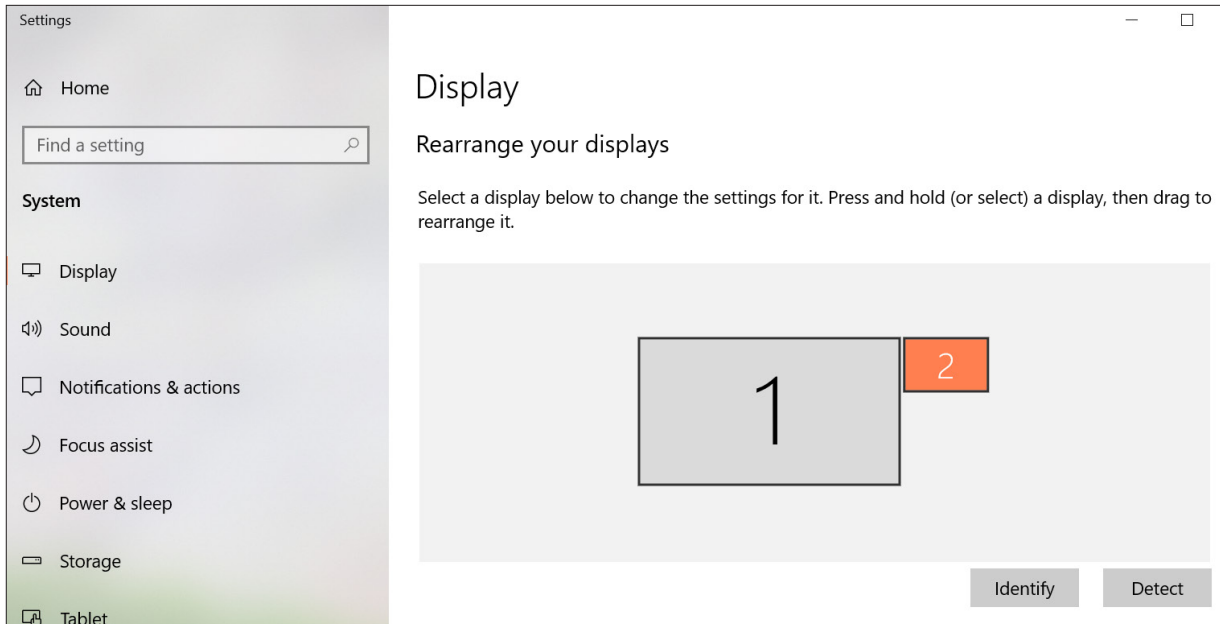


Setting the Display Area

After the pen display is connected to the computer, the Display settings will need to be adjusted.

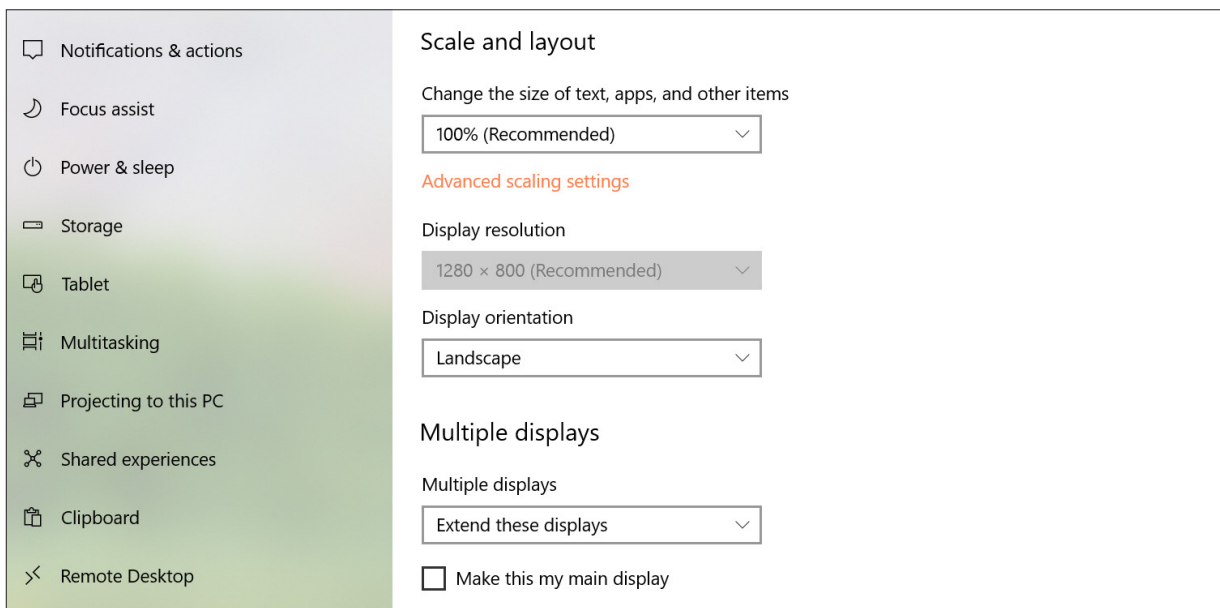
To access your computer's Display settings:

- Go to: **Start > Settings > System > Display**, or
- Right Click on the Desktop and select **Display settings**.



Once inside the Display settings, ensure the pen display is selected and:

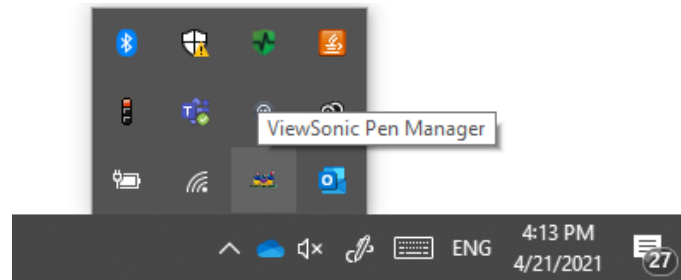
- **Display orientation** is set to **Landscape** or **Portrait**, and
- **Multiple displays** is set to **Extend these displays**.



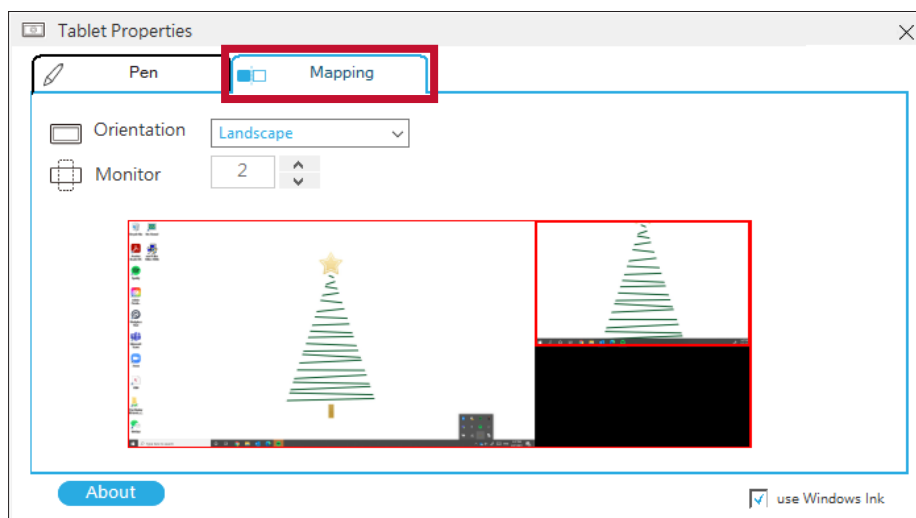
Pen Input Area Mapping

To set the proper pen input area,

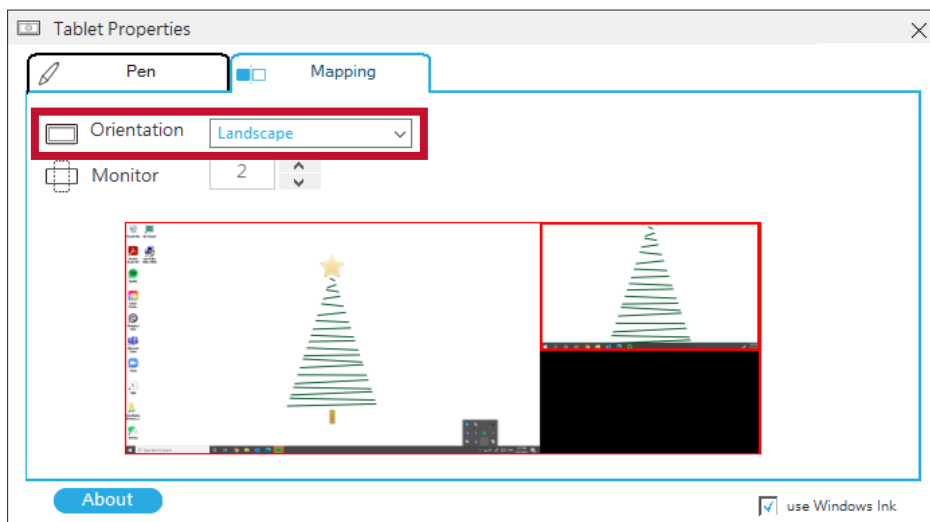
1. Open ViewSonic Pen Manager either by going to: **Start > ViewSonic Pen Manager** or selecting the ViewSonic Pen Manager icon from the System Tray.



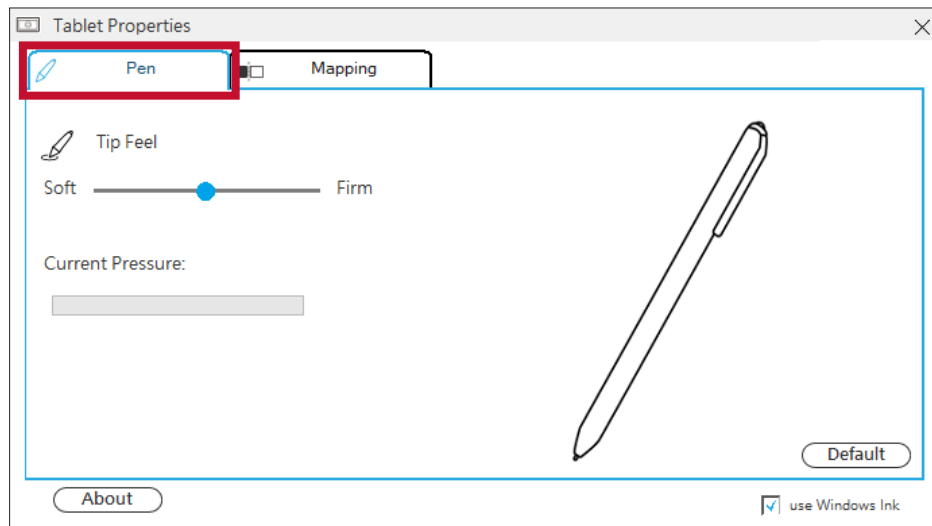
2. Select the **Mapping** tab.



3. Select the correct Orientation, and the correct display.



4. Further adjustments can be made by selecting the **Pen** tab.



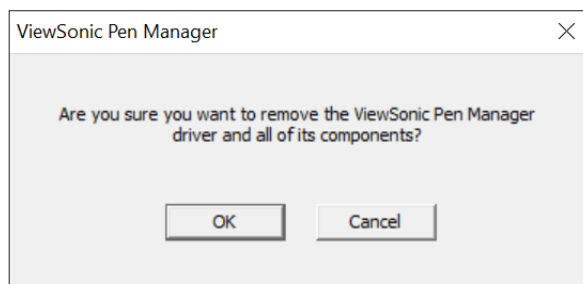
Uninstalling the Driver

There are two ways to uninstall the driver:

- **Start > ViewSonic Pen Manager > Right Mouse Click > Uninstall**

or

- Open the **Control Panel > Programs > Programs and Features > ViewSonic Pen Manager > select Uninstall/Change**



Installing Drivers and Software (MAC OSX)

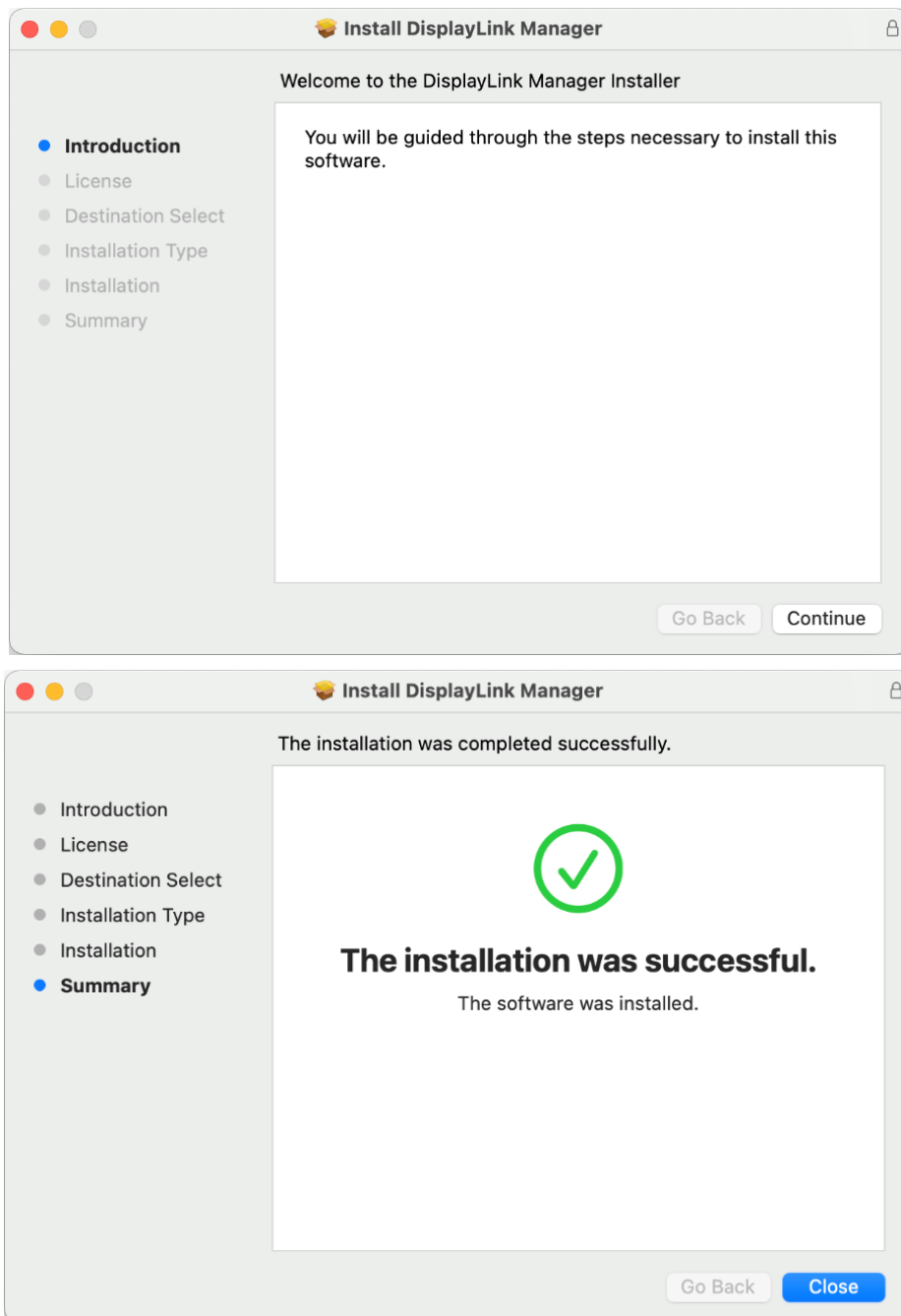
System Requirements: Mac OS 10.15 or above.

Before connecting and using the pen display, it is necessary to install the below drivers and software. The drivers and software can be downloaded at:

<https://www.viewsonic.com/global/products/pendisplay/ID710-BWW>

DisplayLink Driver

1. Open the DisplayLink installation file and install the driver.



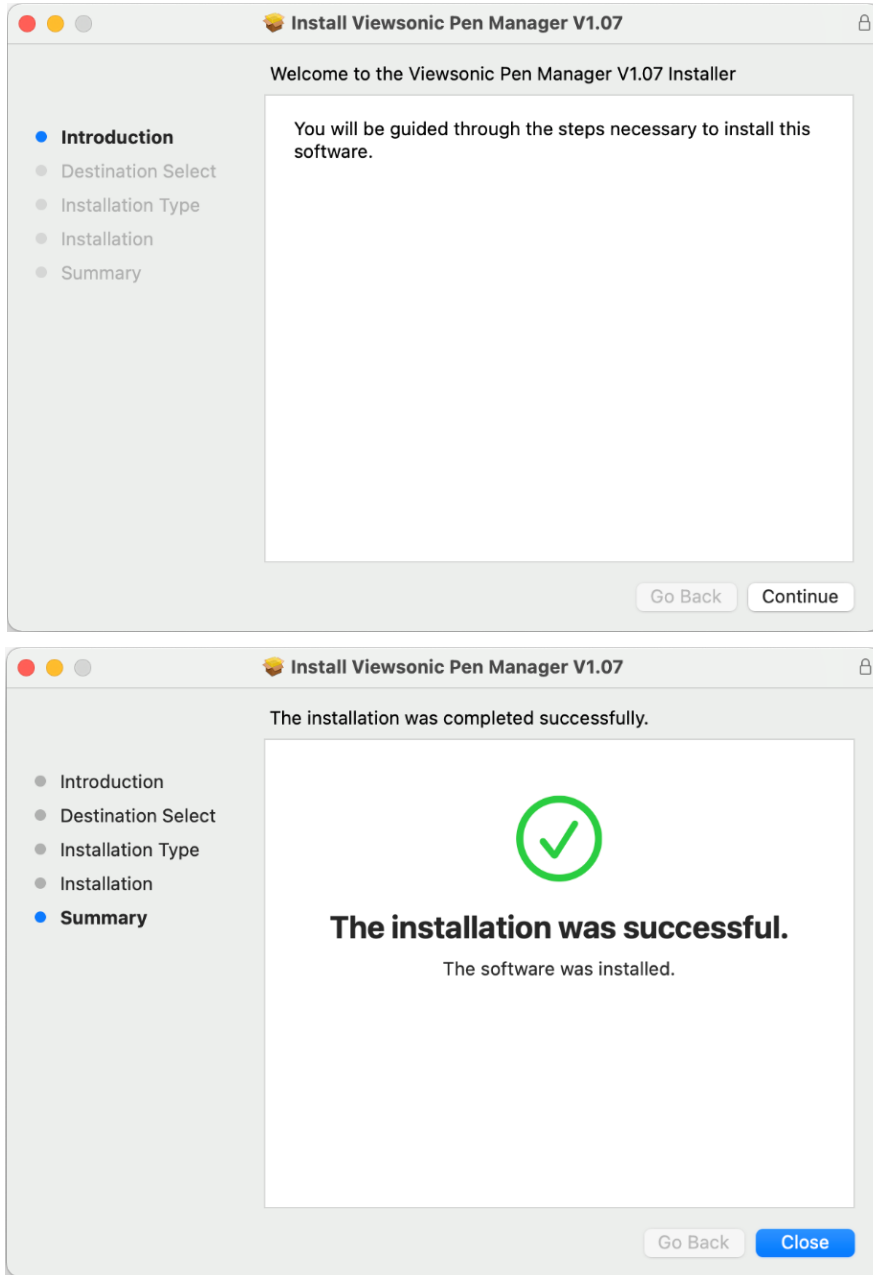
2. After a successful installation, reboot the computer.

3. Plug in the Pen Display and the system will show “DisplayLink Manager” icon in the system tray.



Pen Display Driver

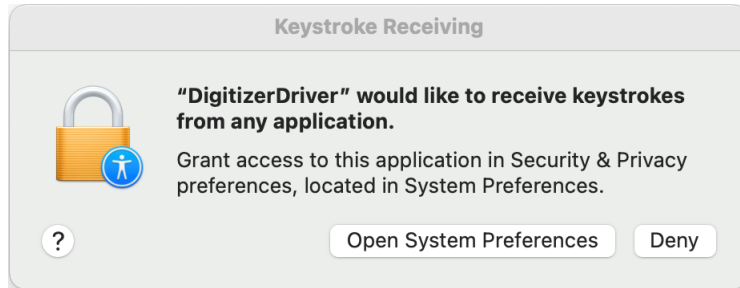
1. Open the PenDisplayDriver installation file and install the driver.



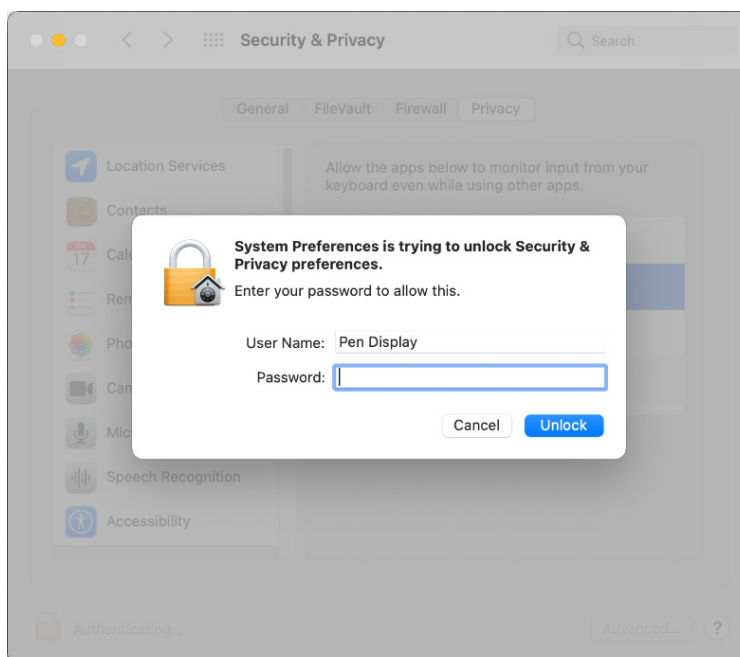
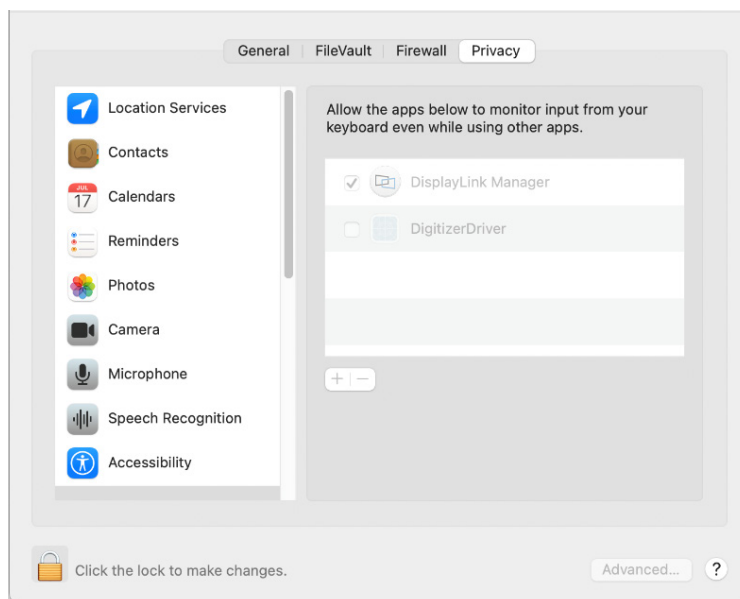
2. After the installation completes, you will need to restart the computer.

3. For macOS version 10.14 and above, the system requires you to give privacy accessibility to allow the tablet driver to work on it. To enable privacy accessibility, follow the step below:

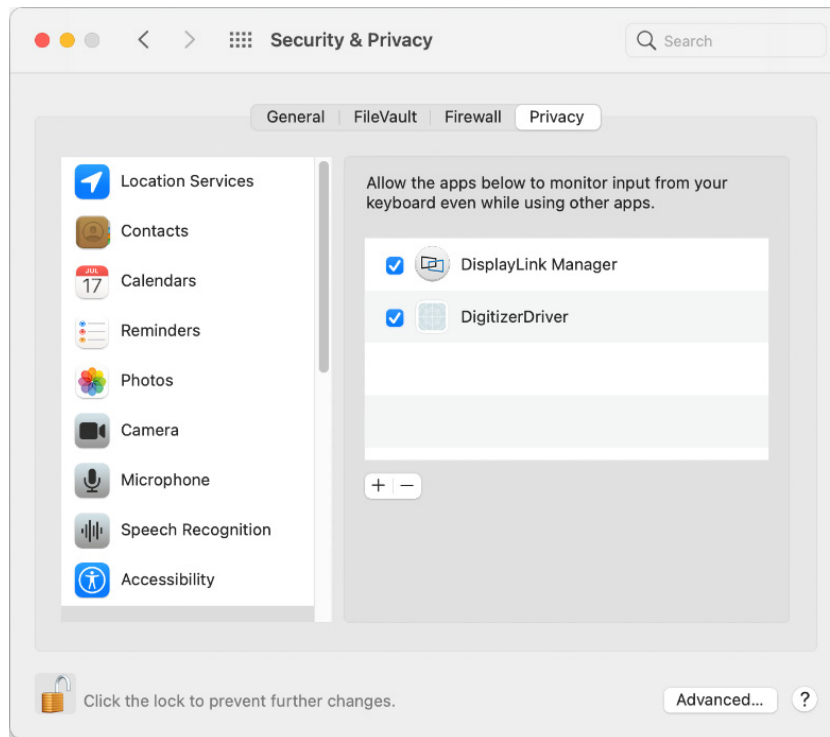
- » Plug in the Pen Display and the system will show the “Keystroke Receiving” interface, please click **Open System Preferences**.



- » Click: **Security & Privacy > Privacy > Accessibility > Unlock.**



» Click the Application and select “DigitizerDriver”.



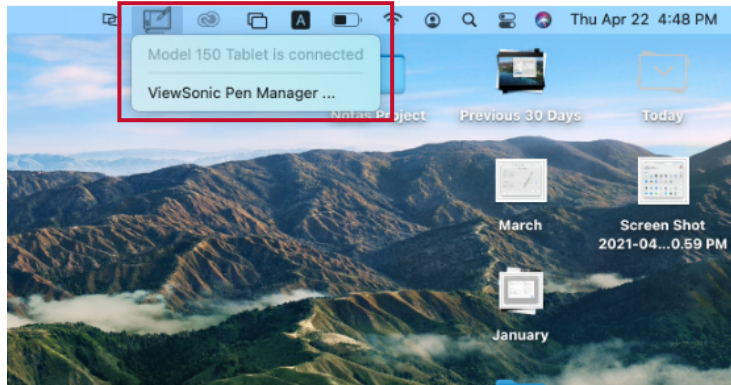
» The system will show the “ViewSonic Pen Manager” icon in the system tray.



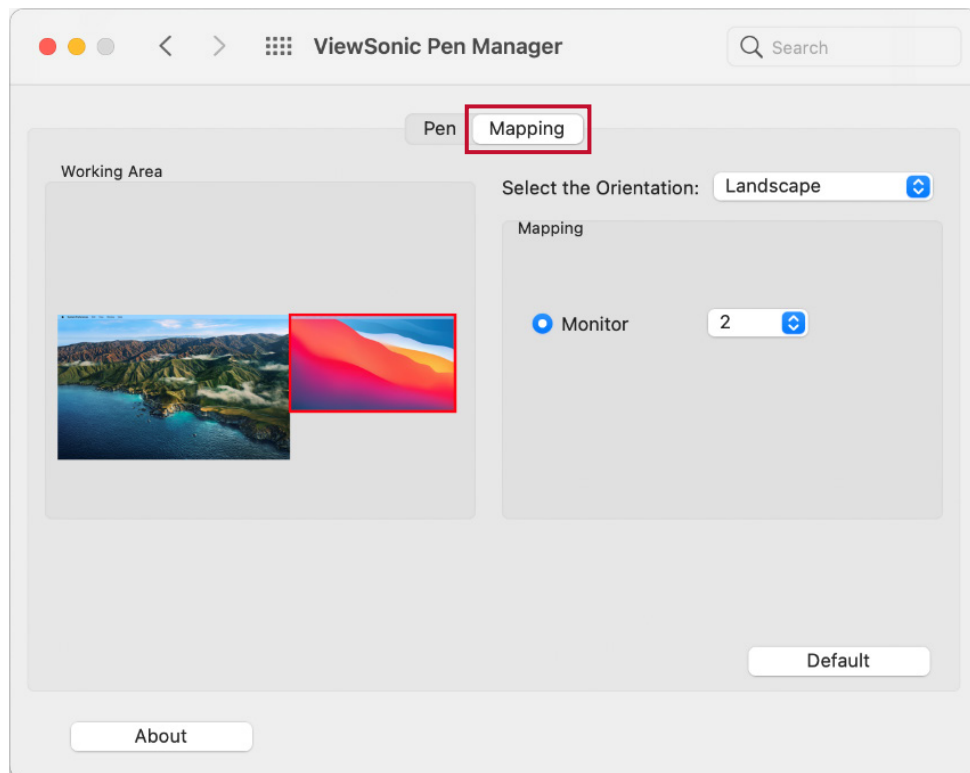
Pen Input Area Mapping

To set the proper pen input area,

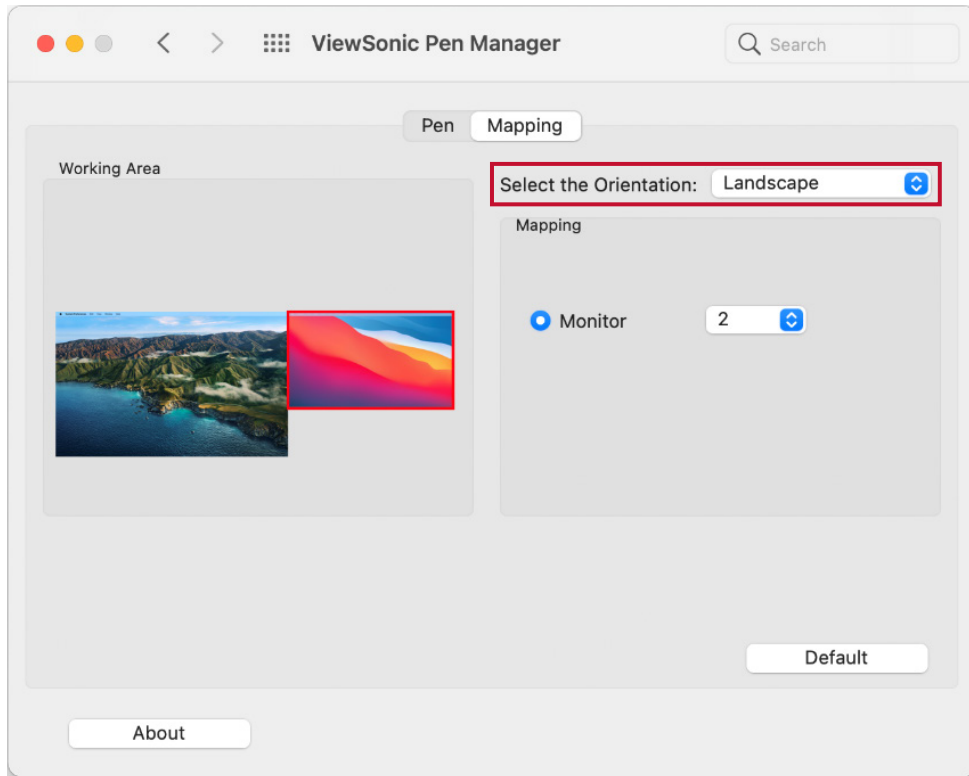
1. Open ViewSonic Pen Manager either by going to: **Start > ViewSonic Pen Manager** or selecting the ViewSonic Pen Manager icon from the System Tray.



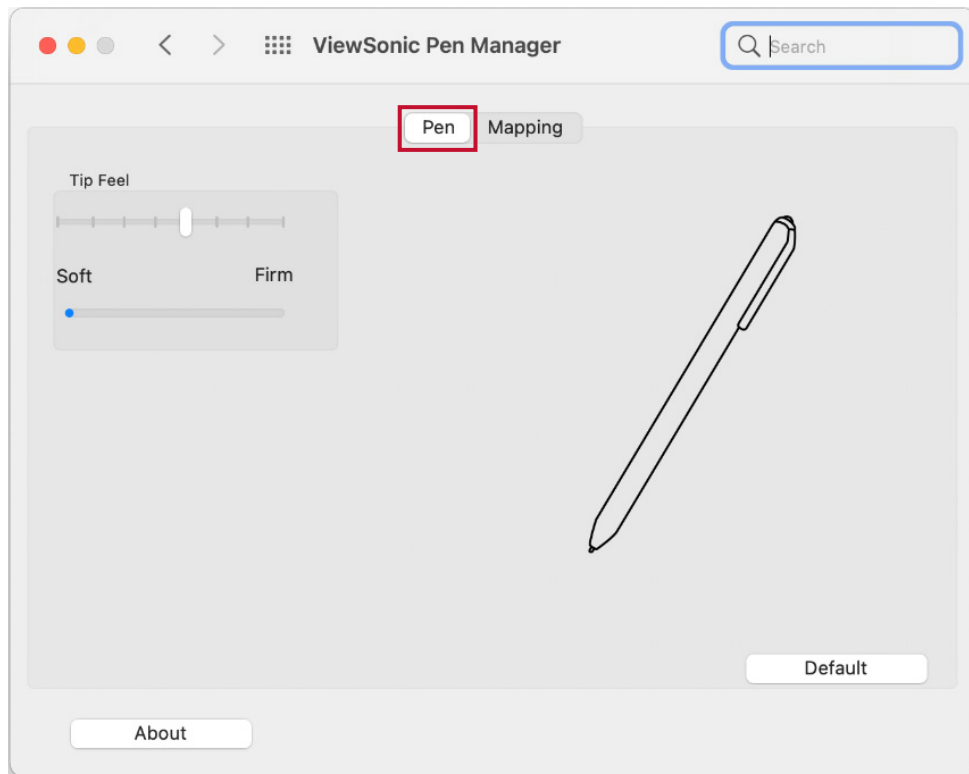
2. Select the **Mapping** tab.



3. Select the correct Orientation, and the correct display.

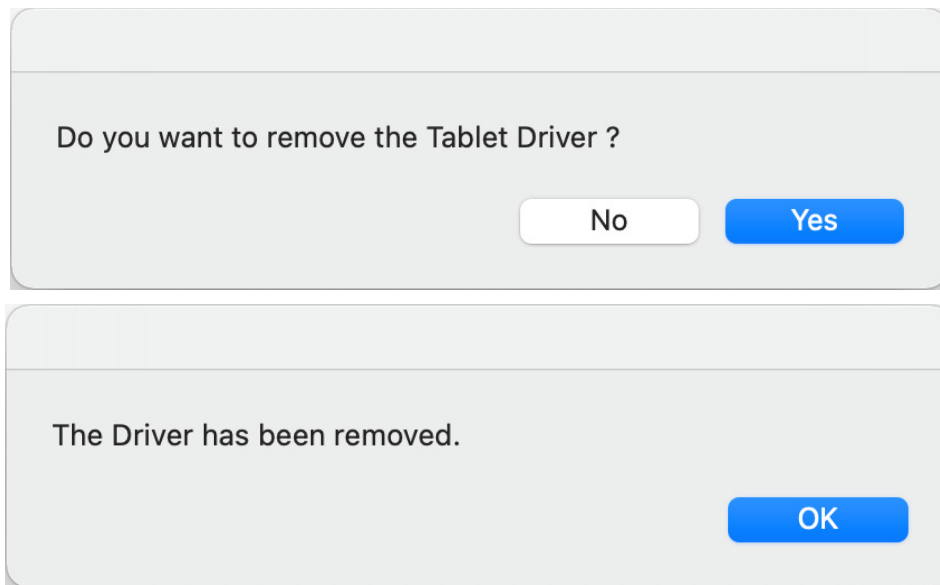


4. Further adjustments can be made by selecting the **Pen** tab.



Uninstalling the Driver

- Select: **Go > Applications > Tablet Utility > Uninstall-Driver.**



- After a successful uninstall, you will need restart your Mac.

> Appendix

Specifications

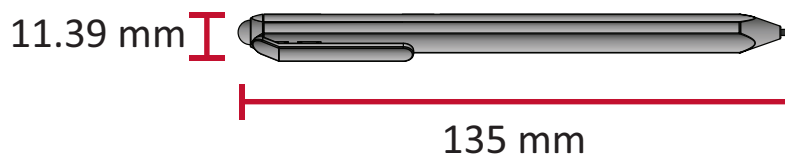
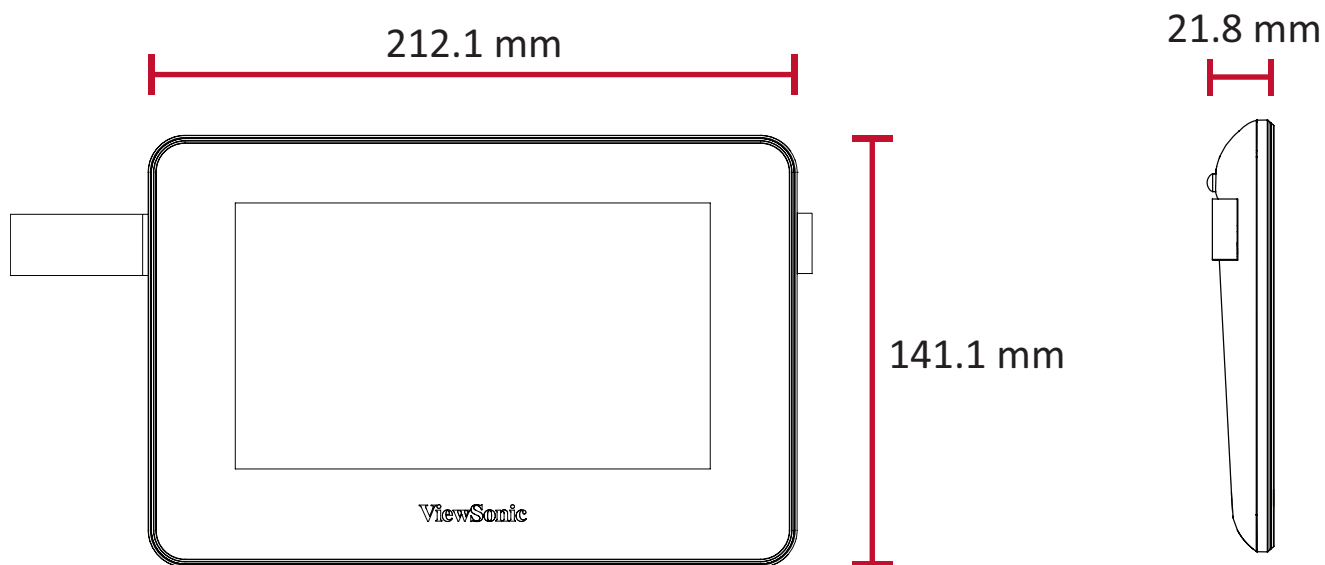
Device

Item	Category	Specifications
LCD	Resolution	1024 x 600
	Pixel Pitch	0.1506 mm (H) x 0.1432 mm (V)
	Glass Treatment	8H
	Contrast Ratio	800:1 (Typical)
Power	USB	USB 2.0 (Compatible) 5V/0.6A (Typical)
Active Area	Dimensions (W x H)	154.178 x 85.852 mm (6.07" x 3.38")
I/O Port	Bidirectional	USB-C x 1
Operating conditions	Temperature	0° C to 40° C (32° F to 104° F)
	Humidity	30% to 80% (non-condensing)
Storage conditions	Temperature	-20° C to 60° C (-4° F to 140° F)
	Humidity	20% to 95% (non-condensing)
Dimensions	Physical (W x H x D)	212.09 x 141.224 x 21.84 mm (8.35" x 5.56" x 0.86")
Weight	Physical	0.352 kg (0.75 lbs)
Power Consumption	On	3W (Typical)

Pen

Item	Specifications
Model	EMP-020-B0WW
Type	Electromagnetic resonance
Power Supply	Battery-less
Resolution	5080 LPI (line per inch)
Pressure Level	8192
Report Rate	Average 250 PPS (point per second)
Detectable Height	5-10 mm above the pad
OS Supported	Windows 7 or later; Mac OS 10.15 or later; ChromeBook; Android 7.0 and above.

Product Dimensions



Troubleshooting

This section describes some common problems that you may experience when using the monitor.

Problem or Issue	Possible Solutions
No picture on the display	<ul style="list-style-type: none">• Ensure the USB cable is connected properly at both ends.• Try another USB port on the computer.• Ensure the computer is powered on.• Ensure all drivers are installed and updated (if applicable).
Display interference	<ul style="list-style-type: none">• Check if other nearby electrical devices are causing interference.
The display is not clear	<ul style="list-style-type: none">• The optimal resolution is 1024 x 600.• Use a soft, dry cloth to remove any fingerprints or skin oil.

Pen

Problem or Issue	Possible Solutions
The pen is not working	<ul style="list-style-type: none">• Try using the computer's mouse; if the mouse also does not work please restart the computer.• Reinstall the pen driver (if applicable).
The pen tip is too short, or not making proper contact with the display	<ul style="list-style-type: none">• Check the condition of the pen tip. If it is too short, please replace the pen tip.
The cursor is not moving correctly	<ul style="list-style-type: none">• Try restarting the computer.• Ensure the USB cable is connected properly at both ends.

FAQ

Question	Possible Solutions
<p>How to find out whether the driver was installed properly?</p>	<ul style="list-style-type: none"> • After the driver was properly installed, and when the tablet and computer are connected properly, a small driver icon will appear in the icon tray of the computer. • When the electromagnetic pen is used on the tablet, it will be able to control the cursor properly, and it will be able to sense pressure during the pressure test in the driver control panel.
<p>What should I do if the small digital control panel icon did not appear in the icon tray of the computer after driver installation was completed?</p>	<ul style="list-style-type: none"> • If the driver was installed for the first time, the computer must be restarted after installation to let the driver complete the initial installation. • Make sure that the tablet is connected properly to the USB interface of the computer (it is recommended to connect to the USB interface at the back of the computer) and has not become loose. • If it was confirmed that the tablet was connected to the USB interface of the computer but there was still no small driver icon, please try to connect to other USB interfaces and restart the computer.
<p>The tablet cannot be used properly, how do I determine whether the malfunction is a hardware or software issue?</p>	<ul style="list-style-type: none"> • Connect the tablet with another computer to test it; if the tablet and the electromagnetic pen can be used on the other computer like a mouse without installing the driver, it means that the malfunction was caused by the current computer.
<p>How does the tablet realize drawing creations?</p>	<ul style="list-style-type: none"> • The tablet is only a type of input device for computers; it is considered hardware, and not drawing software. • If you want to perform drawing creations, it must be used with corresponding drawing software to realize drawing creations. It is recommended you purchase or download related drawing software.

Maintenance

General Precautions

- Make sure the device is turned off and unplugged.
- Never spray or pour any liquid directly onto the device.
- Handle the device with care.

Cleaning the Device

- Use a soft, dry cloth.
- Wipe the device with a clean, soft, lint-free cloth. This removes dust and other particles.

Disclaimer

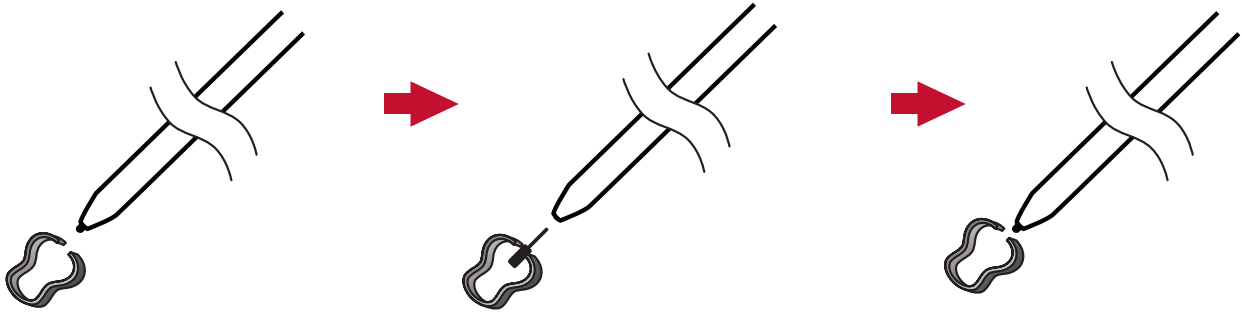
- ViewSonic® does not recommend the use of any ammonia or alcohol-based cleaners on the display screen or case. Some chemical cleaners have been reported to damage the screen and/or case of the monitor.
- ViewSonic® will not be liable for damage resulting from use of any ammonia or alcohol-based cleaners.

Replacing the Pen Nib

The battery-free pen (Electromagnetic pen) features a pen nib with a lifespan of up to 150,000 taps. Three extra pen nibs are included.

To replace a pen nib:

1. Use the *nib removal tool* to pull the old nib straight out of the pen.
2. Insert a new pen nib into the pen and push the nib in until it stops and is held firm.



> Regulatory and Service Information

Compliance Information

This section addresses all connected requirements and statements regarding regulations. Confirmed corresponding applications shall refer to nameplate labels and relevant markings on the unit.

FCC Compliance Statement

This device complies with part 15 of FCC Rules. Operation is subject to the following two conditions: (1) this device may not cause harmful interference, and (2) this device must accept any interference received, including interference that may cause undesired operation. This equipment has been tested and found to comply with the limits for a Class B digital device, pursuant to part 15 of the FCC Rules.

These limits are designed to provide reasonable protection against harmful interference in a residential installation. This equipment generates, uses, and can radiate radio frequency energy, and if not installed and used in accordance with the instructions, may cause harmful interference to radio communications. However, there is no guarantee that interference will not occur in a particular installation. If this equipment does cause harmful interference to radio or television reception, which can be determined by turning the equipment off and on, the user is encouraged to try to correct the interference by one or more of the following measures:


- Reorient or relocate the receiving antenna.
- Increase the separation between the equipment and receiver.
- Connect the equipment into an outlet on a circuit different from that to which the receiver is connected.
- Consult the dealer or an experienced radio/TV technician for help.

Warning: You are cautioned that changes or modifications not expressly approved by the party responsible for compliance could void your authority to operate the equipment.

Industry Canada Statement

CAN ICES-003(B) / NMB-003(B)

CE Conformity for European Countries

 The device complies with the EMC Directive 2014/30/EU and Low Voltage Directive 2014/35/EU.

The following information is only for EU-member states:

The mark shown to the right is in compliance with the Waste Electrical and Electronic Equipment Directive 2012/19/EU (WEEE). The mark indicates the requirement NOT to dispose of the equipment as unsorted municipal waste, but use the return and collection systems according to local law.



Declaration of RoHS2 Compliance

This product has been designed and manufactured in compliance with Directive 2011/65/EU of the European Parliament and the Council on restriction of the use of certain hazardous substances in electrical and electronic equipment (RoHS2 Directive) and is deemed to comply with the maximum concentration values issued by the European Technical Adaptation Committee (TAC) as shown below:

Substance	Proposed Maximum Concentration	Actual Concentration
Lead (Pb)	0.1%	< 0.1%
Mercury (Hg)	0.1%	< 0.1%
Cadmium (Cd)	0.01%	< 0.01%
Hexavalent Chromium (Cr6 ⁺)	0.1%	< 0.1%
Polybrominated biphenyls (PBB)	0.1%	< 0.1%
Polybrominated diphenyl ethers (PBDE)	0.1%	< 0.1%
Bis (2-ethylhexyl) phthalate (DEHP)	0.1%	< 0.1%
Butyl benzyl phthalate (BBP)	0.1%	< 0.1%
Dibutyl phthalate (DBP)	0.1%	< 0.1%
Diisobutyl phthalate (DIBP)	0.1%	< 0.1%

Certain components of products as stated above are exempted under the Annex III of the RoHS2 Directives as noted below. Examples of exempted components are:

- Mercury in cold cathode fluorescent lamps and external electrode fluorescent lamps (CCFL and EEFL) for special purposes not exceeding (per lamp):
 - » Short length (500 mm): maximum 3.5 mg per lamp.
 - » Medium length (> 500 mm and 1,500 mm): maximum 5 mg per lamp.
 - » Long length (> 1,500 mm): maximum 13 mg per lamp.
- Lead in glass of cathode ray tubes.
- Lead in glass of fluorescent tubes not exceeding 0.2% by weight.
- Lead as an alloying element in aluminum containing up to 0.4% lead by weight.
- Copper alloy containing up to 4% lead by weight.

- Lead in high melting temperature type solders (i.e. lead-based alloys containing 85% by weight or more lead).
- Electrical and electronic components containing lead in a glass or ceramic other than dielectric ceramic in capacitors, e.g. piezoelectronic devices, or in a glass or ceramic matrix compound.

Indian Restriction of Hazardous Substances

Restriction on Hazardous Substances statement (India). This product complies with the “India E-waste Rule 2011” and prohibits use of lead, mercury, hexavalent chromium, polybrominated biphenyls or polybrominated diphenyl ethers in concentrations exceeding 0.1 weight % and 0.01 weight % for cadmium, except for the exemptions set in Schedule 2 of the Rule.

Product Disposal at End of Product Life

ViewSonic® respects the environment and is committed to working and living green. Thank you for being part of Smarter, Greener Computing. Please visit the ViewSonic® website to learn more.

USA & Canada:

<http://www.viewsonic.com/company/green/recycle-program/>

Europe:

<http://www.viewsoniceurope.com/eu/support/call-desk/>

Taiwan:

<https://recycle.epa.gov.tw/>

Copyright Information

Copyright© ViewSonic® Corporation, 2021. All rights reserved.

Macintosh and Power Macintosh are registered trademarks of Apple Inc.

Microsoft, Windows, and the Windows logo are registered trademarks of Microsoft Corporation in the United States and other countries.

ViewSonic®, the three birds logo, OnView, ViewMatch, and ViewMeter are registered trademarks of ViewSonic® Corporation.

VESA is a registered trademark of the Video Electronics Standards Association. DPMS, DisplayPort, and DDC are trademarks of VESA.

ENERGY STAR® is a registered trademark of the U.S. Environmental Protection Agency (EPA).

Disclaimer: ViewSonic® Corporation shall not be liable for technical or editorial errors or omissions contained herein; nor for incidental or consequential damages resulting from furnishing this material, or the performance or use of this product.

In the interest of continuing product improvement, ViewSonic® Corporation reserves the right to change product specifications without notice. Information in this document may change without notice.

No part of this document may be copied, reproduced, or transmitted by any means, for any purpose without prior written permission from ViewSonic® Corporation.

Customer Service

For technical support or product service, see the table below or contact your reseller.

NOTE: You will need the product's serial number.

Country/ Region	Website	Country/ Region	Website
Asia Pacific & Africa			
Australia	www.viewsonic.com/au/	Bangladesh	www.viewsonic.com/bd/
中国 (China)	www.viewsonic.com.cn	香港 (繁體中文)	www.viewsonic.com/hk/
Hong Kong (English)	www.viewsonic.com/hk-en/	India	www.viewsonic.com/in/
Indonesia	www.viewsonic.com/id/	Israel	www.viewsonic.com/il/
日本 (Japan)	www.viewsonic.com/jp/	Korea	www.viewsonic.com/kr/
Malaysia	www.viewsonic.com/my/	Middle East	www.viewsonic.com/me/
Myanmar	www.viewsonic.com/mm/	Nepal	www.viewsonic.com/np/
New Zealand	www.viewsonic.com/nz/	Pakistan	www.viewsonic.com/pk/
Philippines	www.viewsonic.com/ph/	Singapore	www.viewsonic.com/sg/
臺灣 (Taiwan)	www.viewsonic.com/tw/	ประเทศไทย	www.viewsonic.com/th/
Việt Nam	www.viewsonic.com/vn/	South Africa & Mauritius	www.viewsonic.com/za/
Americas			
United States	www.viewsonic.com/us	Canada	www.viewsonic.com/us
Latin America	www.viewsonic.com/la		
Europe			
Europe	www.viewsonic.com/eu/	France	www.viewsonic.com/fr/
Deutschland	www.viewsonic.com/de/	Қазақстан	www.viewsonic.com/kz/
Россия	www.viewsonic.com/ru/	España	www.viewsonic.com/es/
Türkiye	www.viewsonic.com/tr/	Україна	www.viewsonic.com/ua/
United Kingdom	www.viewsonic.com/uk/		

Limited Warranty

ViewSonic® Display

What the warranty covers:

ViewSonic® warrants its products to be free from defects in material and workmanship during the warranty period. If a product proves to be defective in material or workmanship during the warranty period, ViewSonic® will, at its sole option, and as your sole remedy, repair or replace the product with a similar product. Replacement Product or parts (e.g. system board, display panel, power board) may include remanufactured or refurbished parts or components. The repair or replacement unit or parts or components will be covered by the balance of the time remaining on the customer's original limited warranty and the warranty period will not be extended. ViewSonic® provides no warranty for any third-party software whether included with the product or installed by the customer, installation of any unauthorized hardware parts or components (e.g. Projector Lamps). (Please refer to: "What the warranty excludes and does not cover" section).

How long the warranty is effective:

ViewSonic® displays are warranted for between 1 and 3 years, depending on your country of purchase, for all parts including the light source and for all labor from the date of the first consumer purchase.

Who the warranty protects:

This warranty is valid only for the first consumer purchaser.

What the warranty excludes and does not cover:

- Any product on which the serial number has been defaced, modified, or removed.
- Damage, deterioration, or malfunction resulting from:
 - » Accident, misuse, neglect, fire, water, lightning, or other acts of nature, unauthorized product modification, or failure to follow instructions supplied with the product.
 - » Repair or attempted repair by anyone not authorized by ViewSonic®.
 - » Damage to or loss of any programs, data, or removable storage media.
 - » Normal wear and tear.
 - » Removal or installation of the product.
- Software or data loss occurring during repair or replacement.
- Any damage of the product due to shipment.
- Causes external to the product, such as electric power fluctuations or failure.

- Use of supplies or parts not meeting ViewSonic’s specifications.
- Failure of owner to perform periodic product maintenance as stated in the User Guide.
- Any other cause which does not relate to a product defect.
- Damage caused by static (non-moving) images displayed for lengthy periods of time (also referred to as image burn-in).
- Software - Any third-party software included with the product or installed by the customer.
- Hardware/Accessories/Parts/Components – Installation of any unauthorized hardware, accessories, consumable parts or components (e.g. Projector Lamps).
- Damage to, or abuse of, the coating on the surface of the display through inappropriate cleaning as described in the product User Guide.
- Removal, installation, and set-up service charges, including wall-mounting of the product.

How to get service:

- For information about receiving service under warranty, contact ViewSonic® Customer Support (Please refer to the “Customer Service” page). You will need to provide your product’s serial number.
- To obtain warranty service, you will be required to provide: (a) the original dated sales slip, (b) your name, (c) your address, (d) a description of the problem, and (e) the serial number of the product.
- Take or ship the product, freight prepaid, in the original container to an authorized ViewSonic® service center or ViewSonic®.
- For additional information or the name of the nearest ViewSonic® service center, contact ViewSonic®.

Limitation of implied warranties:

There are no warranties, express or implied, which extend beyond the description contained herein including the implied warranty of merchantability and fitness for a particular purpose.

Exclusion of damages:

ViewSonic's liability is limited to the cost of repair or replacement of the product. ViewSonic® shall not be liable for:

- Damage to other property caused by any defects in the product, damages based upon inconvenience, loss of use of the product, loss of time, loss of profits, loss of business opportunity, loss of goodwill, interference with business relationships, or other commercial loss, even if advised of the possibility of such damages.
- Any other damages, whether incidental, consequential or otherwise.
- Any claim against the customer by any other party.
- Repair or attempted repair by anyone not authorized by ViewSonic®.

Effect of state law:

This warranty gives you specific legal rights, and you may also have other rights which vary from state to state. Some states do not allow limitations on implied warranties and/or do not allow the exclusion of incidental or consequential damages, so the above limitations and exclusions may not apply to you.

Sales outside the U.S.A. and Canada:

For warranty information and service on ViewSonic® products sold outside of the U.S.A. and Canada, contact ViewSonic® or your local ViewSonic® dealer.

The warranty period for this product in mainland China (Hong Kong, Macao, and Taiwan Excluded) is subject to the terms and conditions of the Maintenance Guarantee Card.

For users in Europe and Russia, full details of warranty provided can be found at: <http://www.viewsonic.com/eu/> under "Support/Warranty Information".

Mexico Limited Warranty

ViewSonic® Display

What the warranty covers:

ViewSonic® warrants its products to be free from defects in material and workmanship, under normal use, during the warranty period. If a product proves to be defective in material or workmanship during the warranty period, ViewSonic® will, at its sole option, repair or replace the product with a like product. Replacement product or parts may include remanufactured or refurbished parts or components & accessories.

How long the warranty is effective:

ViewSonic® LCD displays are warranted for between 1 and 3 years, depending on your country of purchase, for all parts including the light source and for all labour from the date of the first consumer purchase.

Who the warranty protects:

This warranty is valid only for the first consumer purchaser.

What the warranty excludes and does not cover:

- Any product on which the serial number has been defaced, modified or removed.
- Damage, deterioration, or malfunction resulting from:
 - » Accident, misuse, neglect, fire, water, lightning, or other acts of nature, unauthorized product modification, unauthorized attempted repair, or failure to follow instructions supplied with the product.
 - » Causes external to the product, such as electrical power fluctuations or failure.
 - » Use of supplies or parts not meeting ViewSonic®'s specifications.
 - » Normal wear and tear.
 - » Any other cause which does not relate to a product defect.
- Any product exhibiting a condition commonly known as "image burn-in" which results when a static image is displayed on the product for an extended period of time.
- Removal, installation, insurance, and set-up service charges.

How to get service:

For information about receiving service under warranty, contact ViewSonic® Customer Support (Please refer to the attached “Customer Service” page). You will need to provide your product’s serial number, so please record the product information in the space provided below on your purchase for your future use. Please retain your receipt of proof of purchase to support your warranty claim.

For Your Records

Product Name: _____ Model Number: _____

Document Number: _____ Serial Number: _____

Purchase Date: _____ Extended Warranty Purchase? _____ (Y/N)

If so, what date does warranty expire? _____

- To obtain warranty service, you will be required to provide (a) the original dated sales slip, (b) your name, (c) your address, (d) a description of the problem, and (e) the serial number of the product.
- Take or ship the product, in the original container packaging, to an authorized ViewSonic® service center.
- Round trip transportation costs for in-warranty products will be paid by ViewSonic®.

Limitation of implied warranties:

There are no warranties, express or implied, which extend beyond the description contained herein including the implied warranty of merchantability and fitness for a particular purpose.

Exclusion of damages:

ViewSonic®’s liability is limited to the cost of repair or replacement of the product. ViewSonic® shall not be liable for:

- Damage to other property caused by any defects in the product, damages based upon inconvenience, loss of use of the product, loss of time, loss of profits, loss of business opportunity, loss of goodwill, interference with business relationships, or other commercial loss, even if advised of the possibility of such damages.
- Any other damages, whether incidental, consequential or otherwise.
- Any claim against the customer by any other party.
- Repair or attempted repair by anyone not authorized by ViewSonic®.

Contact Information for Sales & Authorized Service (Centro Autorizado de Servicio) within Mexico:	
Name, address, of manufacturer and importers: México, Av. de la Palma #8 Piso 2 Despacho 203, Corporativo Interpalmas, Col. San Fernando Huixquilucan, Estado de México Tel: (55) 3605-1099 http://www.viewsonic.com/la/soporte/index.htm	
NÚMERO GRATIS DE ASISTENCIA TÉCNICA PARA TODO MÉXICO: 001.866.823.2004	
Hermosillo: Distribuciones y Servicios Computacionales SA de CV. Calle Juárez 284 local 2 Col. Bugambilias C.P: 83140 Tel: 01-66-22-14-9005 E-Mail: disc2@hmo.megared.net.mx	Villahermosa: Compumantenimientos Garantizados, S.A. de C.V. AV. GREGORIO MENDEZ #1504 COL, FLORIDA C.P. 86040 Tel: 01 (993) 3 52 00 47 / 3522074 / 3 52 20 09 E-Mail: compumantenimientos@prodigy.net.mx
Puebla, Pue. (Matriz): RENTA Y DATOS, S.A. DE C.V. Domicilio: 29 SUR 721 COL. LA PAZ 72160 PUEBLA, PUE. Tel: 01(52).222.891.55.77 CON 10 LINEAS E-Mail: datos@puebla.megared.net.mx	Veracruz, Ver.: CONEXION Y DESARROLLO, S.A DE C.V. Av. Americas # 419 ENTRE PINZÓN Y ALVARADO Fracc. Reforma C.P. 91919 Tel: 01-22-91-00-31-67 E-Mail: gacosta@qplus.com.mx
Chihuahua: Soluciones Globales en Computación C. Magisterio # 3321 Col. Magisterial Chihuahua, Chih. Tel: 4136954 E-Mail: Cefeo@soluglobales.com	Cuernavaca: Compusupport de Cuernavaca SA de CV Francisco Leyva # 178 Col. Miguel Hidalgo C.P. 62040, Cuernavaca Morelos Tel: 01 777 3180579 / 01 777 3124014 E-Mail: aquevedo@compusupportcva.com
Distrito Federal: QPLUS, S.A. de C.V. Av. Coyoacán 931 Col. Del Valle 03100, México, D.F. Tel: 01(52)55-50-00-27-35 E-Mail : gacosta@qplus.com.mx	Guadalajara, Jal.: SERVICRECE, S.A. de C.V. Av. Niños Héroes # 2281 Col. Arcos Sur, Sector Juárez 44170, Guadalajara, Jalisco Tel: 01(52)33-36-15-15-43 E-Mail: mmiranda@servicrece.com
Guerrero Acapulco: GS Computación (Grupo Sesicomp) Progreso #6-A, Colo Centro 39300 Acapulco, Guerrero Tel: 744-48-32627	Monterrey: Global Product Services Mar Caribe # 1987, Esquina con Golfo Pérsico Fracc. Bernardo Reyes, CP 64280 Monterrey N.L. México Tel: 8129-5103 E-Mail: aydeem@gps1.com.mx
MERIDA: ELECTROSER Av Reforma No. 403Gx39 y 41 Mérida, Yucatán, México CP97000 Tel: (52) 999-925-1916 E-Mail: rrrb@sureste.com	Oaxaca, Oax.: CENTRO DE DISTRIBUCION Y SERVICIO, S.A. de C.V. Murguía # 708 P.A., Col. Centro, 68000, Oaxaca Tel: 01(52)95-15-15-22-22 Fax: 01(52)95-15-13-67-00 E-Mail: gpotai2001@hotmail.com
Tijuana: STD Av Ferrocarril Sonora #3780 L-C Col 20 de Noviembre Tijuana, Mexico	FOR USA SUPPORT: ViewSonic® Corporation 381 Brea Canyon Road, Walnut, CA. 91789 USA Tel: 800-688-6688 E-Mail: http://www.viewsonic.com



ViewSonic®