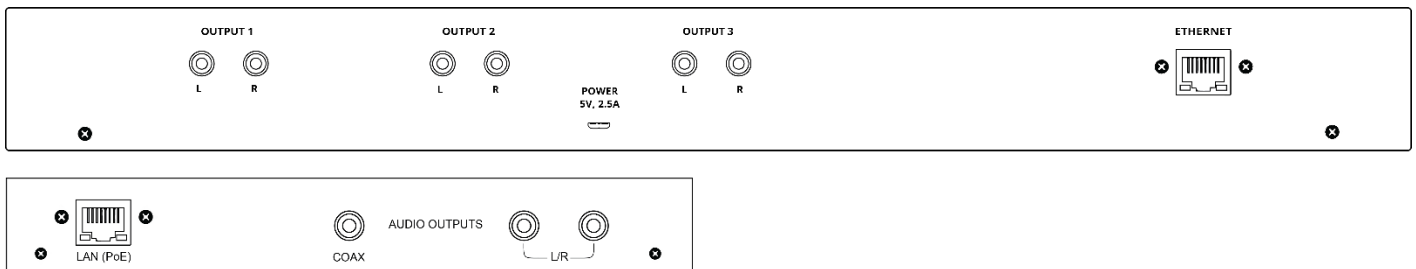


MS-1 / MS-3 Music Streamer Setup

Contents

A. Overview	1
B. Getting Started	1
C. Launch the RTI Music Configuration Utility.....	2
D. Connect to the MS1 / MS-3.....	3
E. Check Connectivity Status	3
F. Update the MS-1 / MS-3 Firmware.....	5
G. Update the License.....	5
H. Reboot the MS-1 / MS-3	6
I. Add a NAS Drive to the MS-1 / MS-3.....	6



A. Overview

Learn how to set up the MS1 or MS-3 Music Streamer in a hassle-free and convenient way.

B. Getting Started

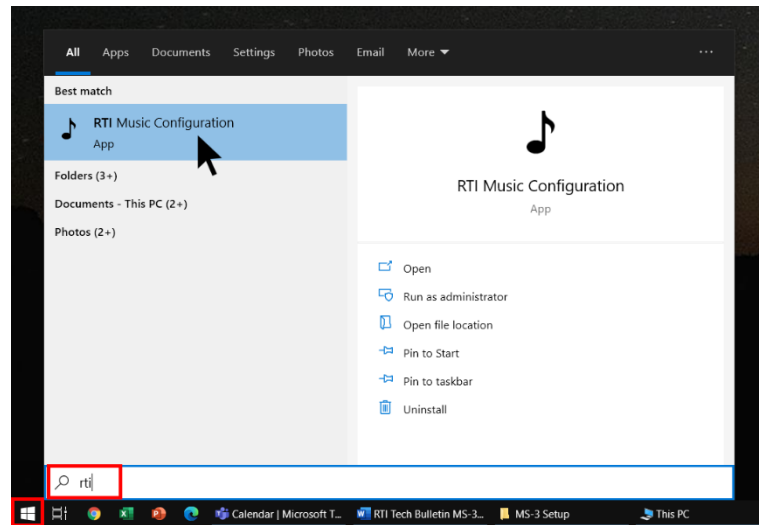
Before setting up the MS-1 / MS-3 make sure you are completely up to date with all the necessary software and firmware.

1. Update your processor's Firmware
2. Update all your controllers' Firmware
3. Update the Integration Designer software to the latest version
4. Update your RTI Panel App on the respective App store

C. Launch the RTI Music Configuration Utility

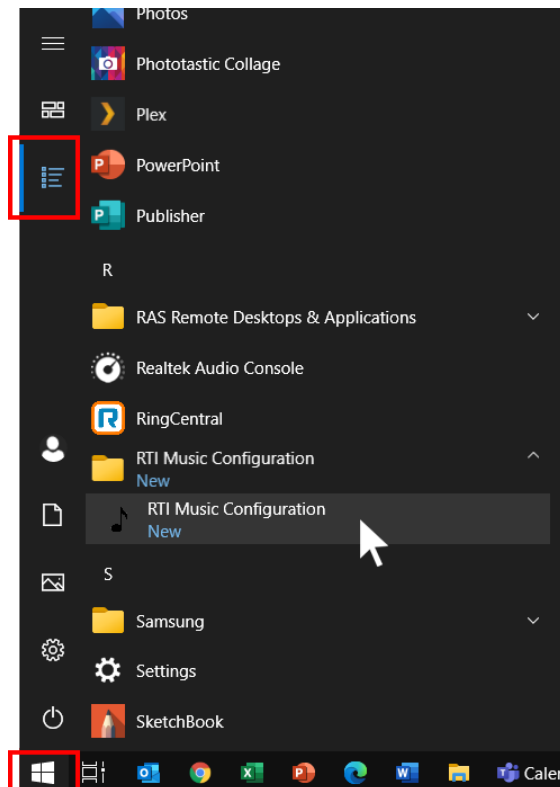
Option 1

Click the “Windows Start Button” on the bottom left corner of your monitor and type “rti” to find the RTI Music Configuration tool that was installed with the latest Integration Designer software. Click on “RTI Music Configuration” to launch it.



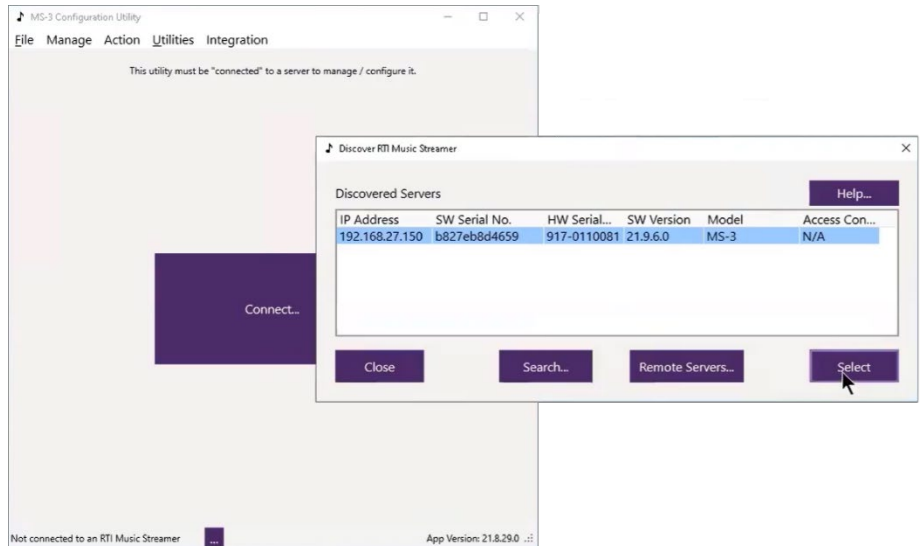
Option 2

Click the “Windows Start” Button on the bottom left corner of your monitor then click on “All Apps”, scroll down to the Apps that start with an “R” and click “RTI Music Configuration” to launch it.



D. Connect to the MS1 / MS-3

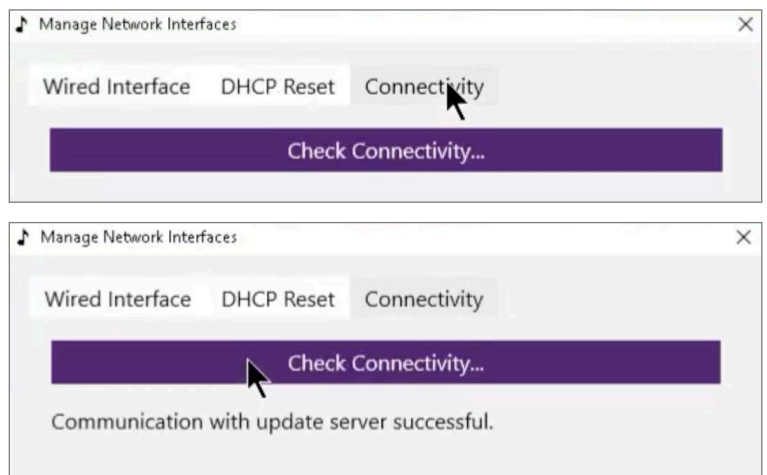
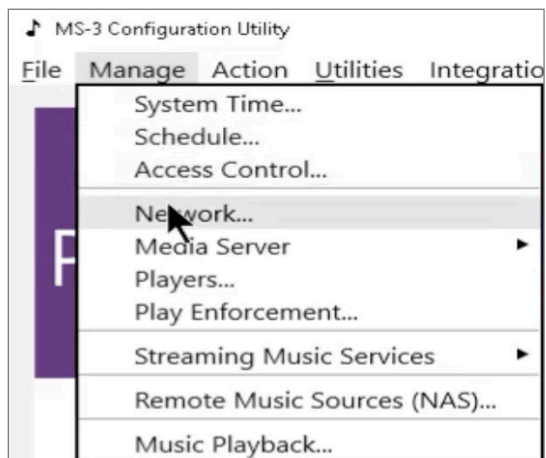
Your computer needs to be in the same network as the MS-1/ MS-3 to be able to connect to it for the setup procedure. Once you launched the RTI Music Configuration software it will automatically search the network for MS-1 / MS-3 units. Select the MS-1 / MS-3 you want to setup.



E. Check Connectivity Status

Check the Connectivity Status to make sure the communication with the update server is successful.

1. Select "Manage" then select "Network"
2. Select the "Connectivity" tab and click on "Check Connectivity"



Important Note:

If the MS-1 / MS-3 Configuration Utility returns the message “Unable to Communicate with the Update Server”, follow these steps:

1. Change the DNS Servers in the router to:
Primary: 8.8.8.8
Secondary: 8.8.4.4

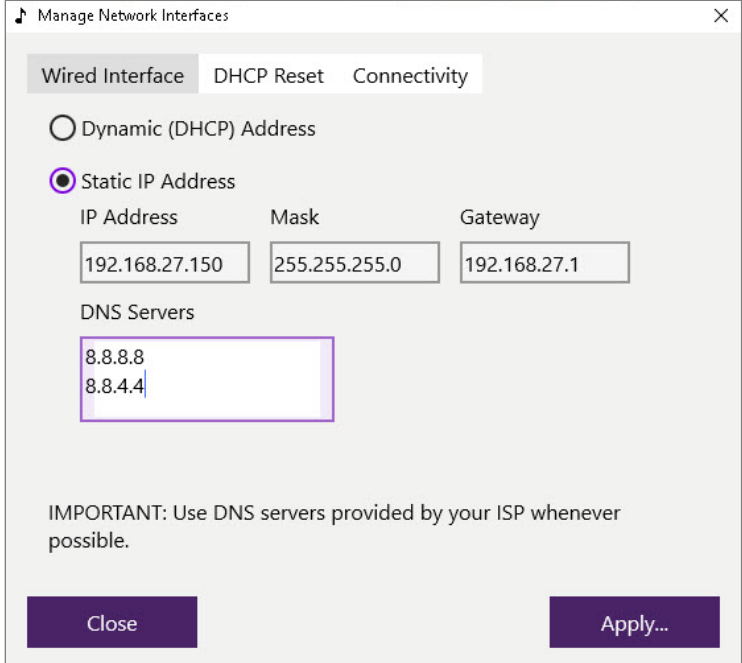
Please check with your system admin or router user guide for information on how to access and change DNS addresses on your router brand.

2. Reboot the MS-1 / MS-3: Select “Action” then select “Reboot”

If you still get the “Unable to Communicate ...” message, take these additional steps:

1. Launch the MS-1 / MS-3 configuration utility from the “RTI Music Configuration” in the start menu.
2. In the MS-1 / MS-3 configuration utility, select “Manage” then select “Network”.

3. Select the “Static IP Address” radio button under the “Wired Interface” tab.
 - a. Select an available IP address preferably outside the DHCP range and type it into the **IP Address** field.
 - b. In the **Mask** field, enter in your network subnet address.
 - c. In the **Gateway** field, enter in the network gateway, typically the router IP address.



The screenshot shows a window titled "Manage Network Interfaces" with a close button (X) in the top right corner. It has three tabs: "Wired Interface" (selected), "DHCP Reset", and "Connectivity". Under "Wired Interface", there are two radio buttons: "Dynamic (DHCP) Address" (unselected) and "Static IP Address" (selected). Below these are three input fields: "IP Address" with the value "192.168.27.150", "Mask" with "255.255.255.0", and "Gateway" with "192.168.27.1". Below these is a "DNS Servers" field containing "8.8.8.8" and "8.8.4.4" on separate lines. At the bottom, there is a note: "IMPORTANT: Use DNS servers provided by your ISP whenever possible." and two buttons: "Close" and "Apply...".

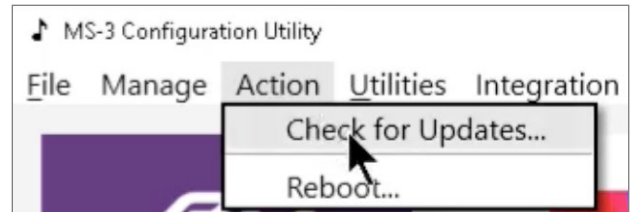
4. Add both DNS server addresses as entered in the router settings in the **DNS Servers** box.
Primary: 8.8.8.8
Secondary: 8.8.4.4

5. Reboot the MS-1 / MS-3: Select “Action” then select “Reboot”
6. Update the license – see section G on the next page

F. Update the MS-1 / MS-3 Firmware

Updating the MS-1 / MS-3 firmware is a mandatory. Make sure the update process finishes properly.

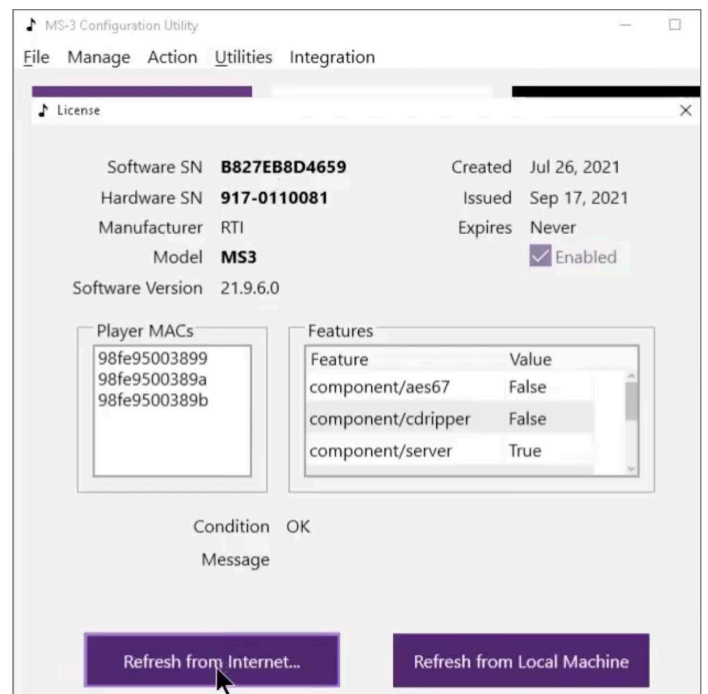
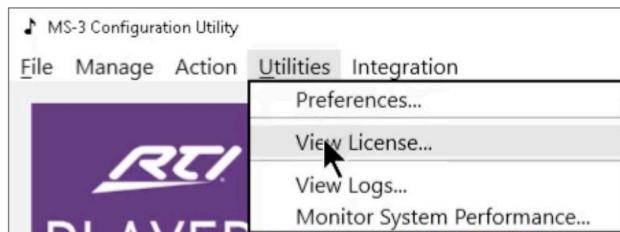
1. Select "Action"
2. Select "Check for Updates"



G. Update the License

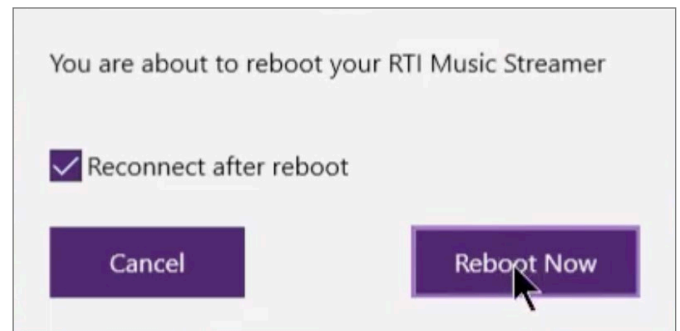
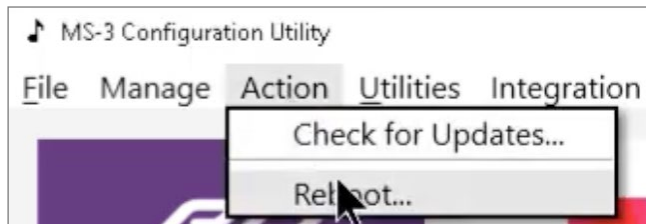
Make sure the Manufacturer is listed as RTI and the software version is 21.9.6.0 or higher.

1. Select "Utility" then select "View License"
2. Click "Refresh from Internet"



H. Reboot the MS-1 / MS-3

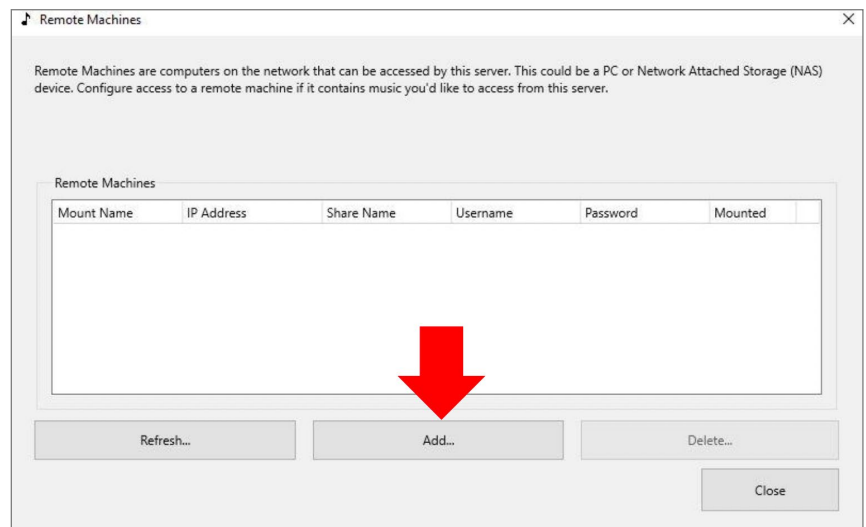
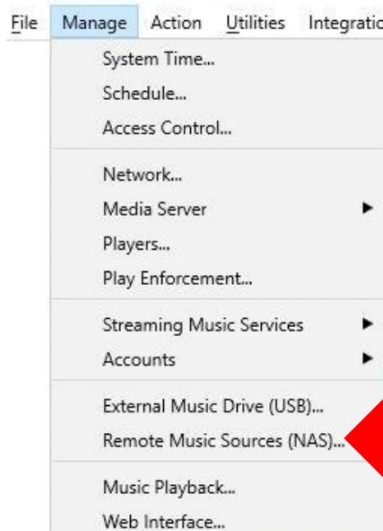
1. Select "Action" then select "Reboot"
2. Click "Reboot Now"



I. Add a NAS Drive to the MS-1 / MS-3

A NAS (Network Attached Storage) is a convenient way to access local music through the MS-1 / MS-3 Music Streamer. You can browse and search music on a NAS drive just like with any music streaming service.

1. Select "Manage" then select "Remote Music Sources (NAS)"
2. Click "Add" to open the "Remote Machine" window



3. Enter the required information

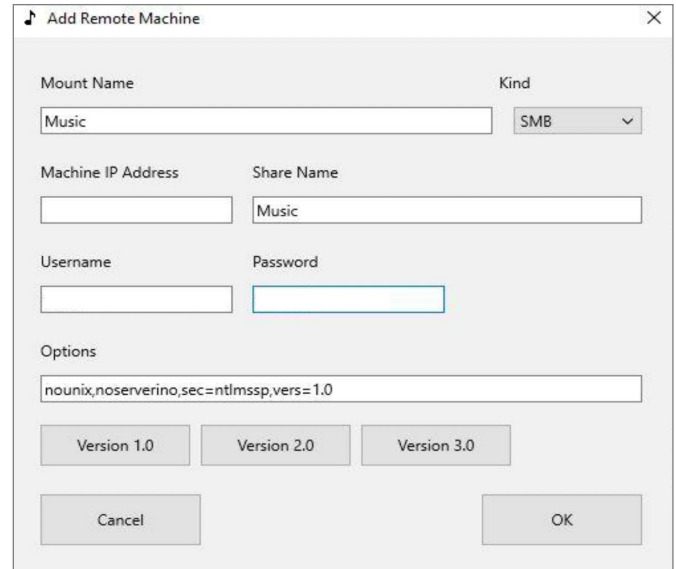
Mount Name: Choose any name. A single word makes the process simpler.

Machine IP Address: IP address of the NAS unit Example: 192.168.1.100

Share Name: The root directory where the music files are stored.
Example: If the music is in the subdirectory [Music\iTunes\iTunesMedia] the Share Name for the RTI MS-1 / MS-3 is Music since this is the root directory. The directory name is case sensitive. Make sure to enter the name in the exact way as the directory is named on the NAS drive.

Username & Password: Credentials are required to enable the MS-1 / MS-3 to access the music on the NAS drive.

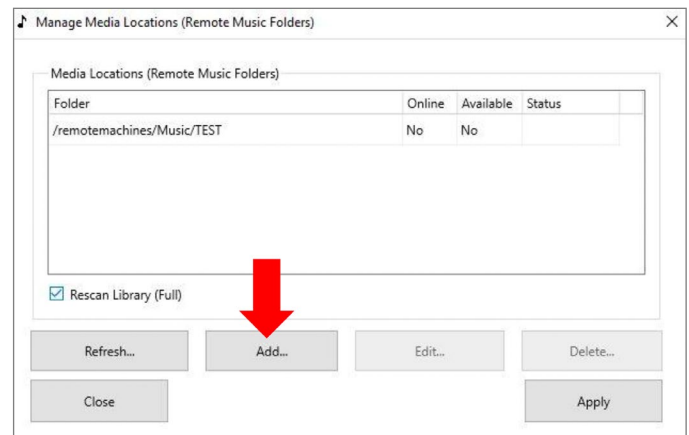
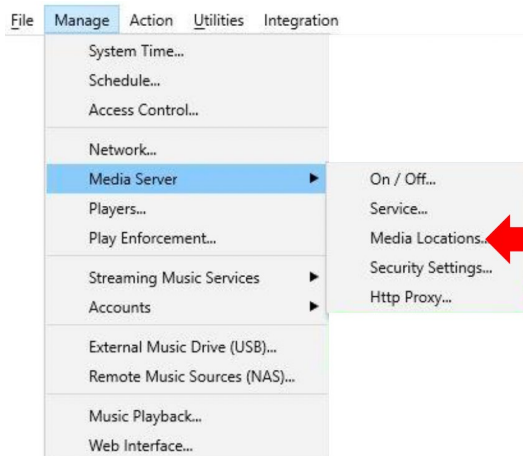
Version: Depending on how old the NAS device and its software is you might need to change the version from 1.0 to 2.0 or 3.0 if the credentials are not being accepted.



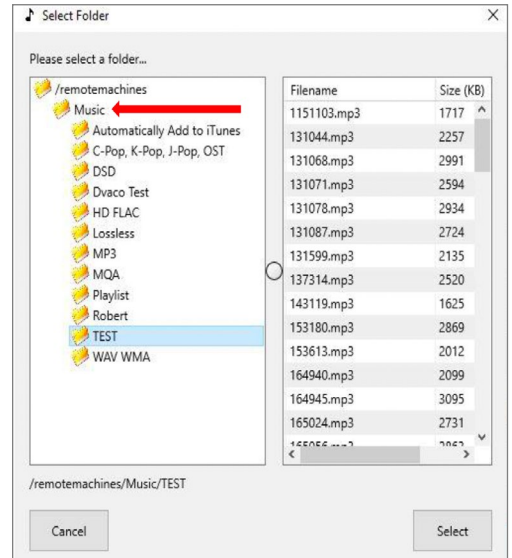
After entering the requested information, connect the MS-1 / MS-3 to the correct directory on the NAS drive.

4. Select “Manage” then select “Media Server” then select “Media Locations”

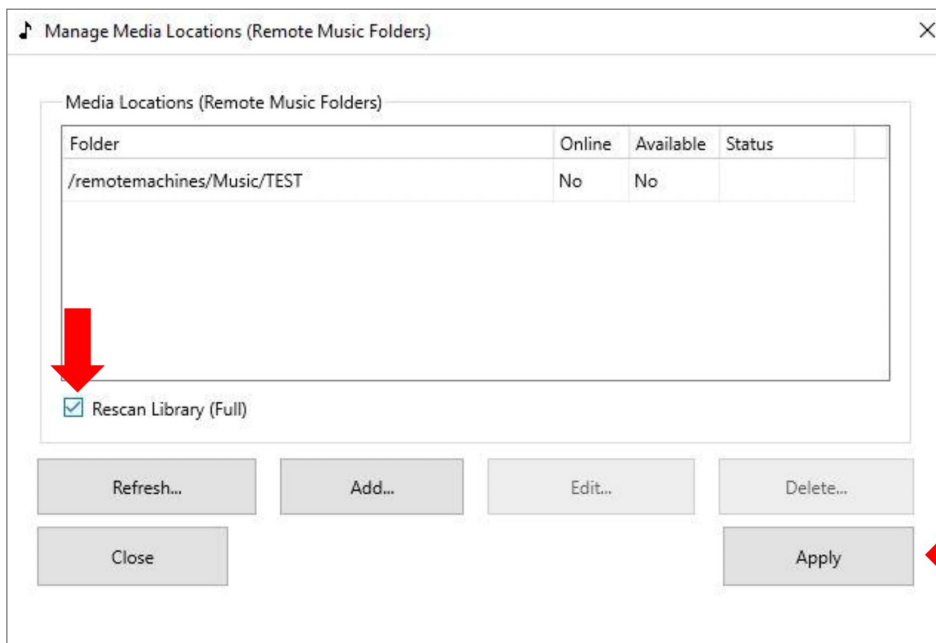
5. Click “Add” to open the Browse Window



6. Select the directory you added as Share Name in step 3 or a subdirectory if you don't want to access the entire music library with the MS-1 / MS-3 and press "Select"



7. Your music directory now shows in the Media Locations window.
8. The link to the folder will not be established until you confirm with "Apply".
9. Make sure "Rescan Library (Full)" is checked
10. Click "Apply" to complete the process.



Close the Media Locations window. The MS-1 / MS-3 Music Streamer is now scanning the music library.

This can take some time depending on how large the music library is. However, your RTI Music Streamer is now ready to play music. If it is still scanning the music library, you'll see more folders and songs appearing on your RTI control device, Smartphone, or Tablet.