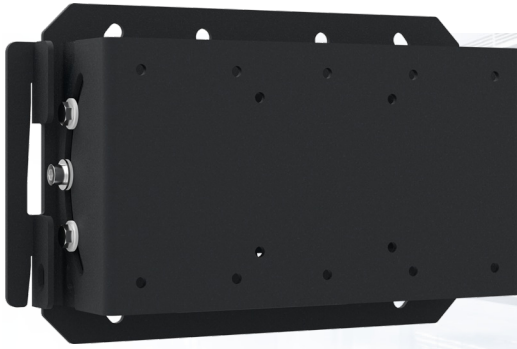


## Tiltbare VESA wall mount



### 052.3050 Tilttable VESA wall mount (VESA 75, VESA 100, VESA 200-100)

All universal wall mounts are VESA compatible. Besides wall mounting, all our wall mounts can be used for ceiling mounting in combination with a tube set, and directly fastened to the stands thanks to its 170 x 140 mm mounting pattern. The mounts include fastening material, to secure the mount to the display. Furthermore they include a safety bar or fixation, offering you protection from theft; a padlock is to be added separately.

Tiltbare VESA wall mount

Features

**Weight:** 3.00 kg

**Colour:** Black

**Maximum load:** 40 kg

**Screen position:** Landscape

**Type bracket/interface:** VESA

**Range bracket/interface:** VESA 75, 100, 200-100

**Tilt function:** +13° till -13°

**Mounting system:** 170 x 140 mm

