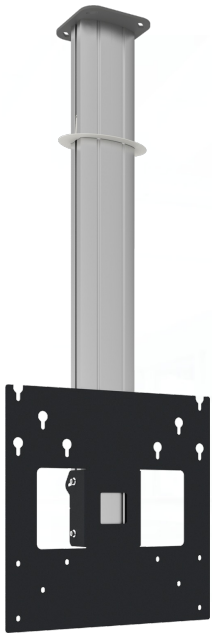


Ceiling mount 1 metre



072.8100-144 Ceiling mount 1 metre (light series) incl. bracket VESA 400

The light series ceiling mounts are specifically developed for mounting light displays up to 30 kg to the ceiling. Each ceiling mount consists of a ceiling plate with an aluminium column of 1, 2 and 3 metre attached; which can easily be shortened in length. A white ceiling ring will cover the hole made in the suspended ceiling. A screen mount with most common VESA pattern is supplied and has a tilt function of 15 °. Cables can be nicely concealed in the cable duct.

We have an expansion set to VESA 600-400. At this moment to be used especially for portrait, but we will soon introduce an improved set also for landscape use.

Ceiling mount 1 metre

Features

Maximum length: 1000 mm

Weight: 12.30 kg

Colour: Dark grey, Aluminium

Maximum load: 30 kg

Screen position: Landscape, Portrait

Inch range: Max. 55 inch

Bracket/interface: Included

Type bracket/interface: VESA

Range bracket/interface: VESA 200, 300, 400 - 200, 400

Tilt function: Max. 15°

Cable duct: 35 x 15 mm

